

DISSIDENT

Dissident Ducktail Spoiler Fitting

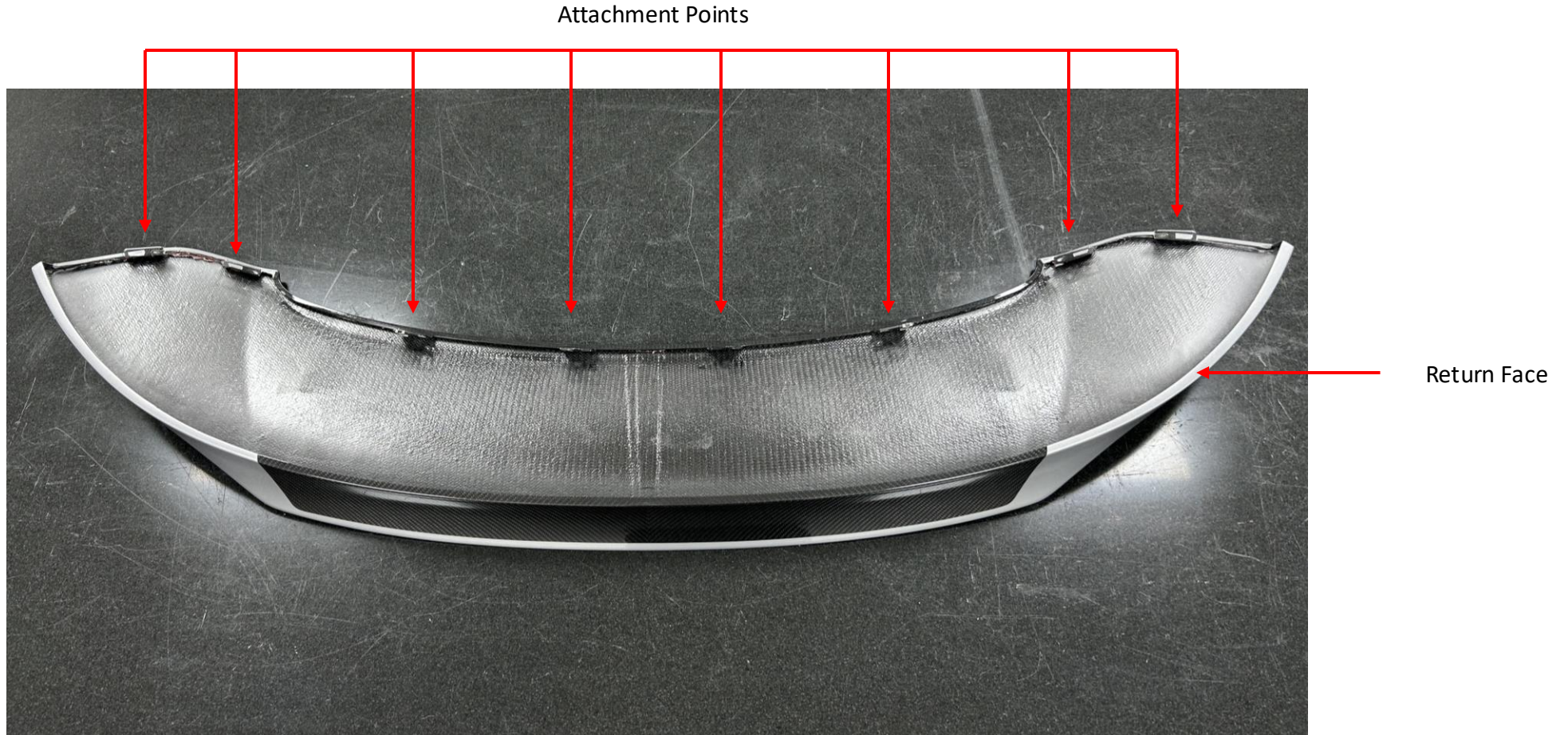
Dissident Ducktail Spoiler Fitting



- This guide illustrates the preferred approach utilised by Dissident Automotive Ltd to fit our carbon fibre Ducktail spoiler

Dissident Ducktail Spoiler Fitting

- The ducktail features 8 attachment points in the leading edge of the underside and a return face that slides over the standard lower plastic moulding (not the original spoiler which must be removed) locking the ducktail into place.



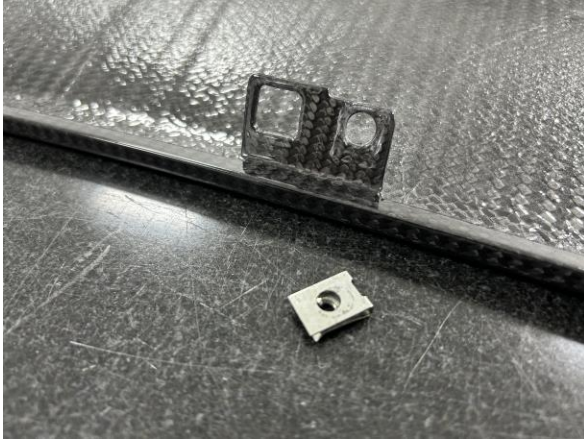
Dissident Ducktail Spoiler Fitting



- The standard spoiler should be raised to the up position which can be done manually from inside the car.
- The 8 attachment / bolt points can be seen along the leading edge. They each have a plastic blanking shield which should be removed to allow access to the bolt beneath.
- The standard attachment bolt is a torx T20.
- Once all 8 bolts are undone, the standard spoiler should be slid backward and then lifted off the car, leaving the underside standard spoiler moulding in place.

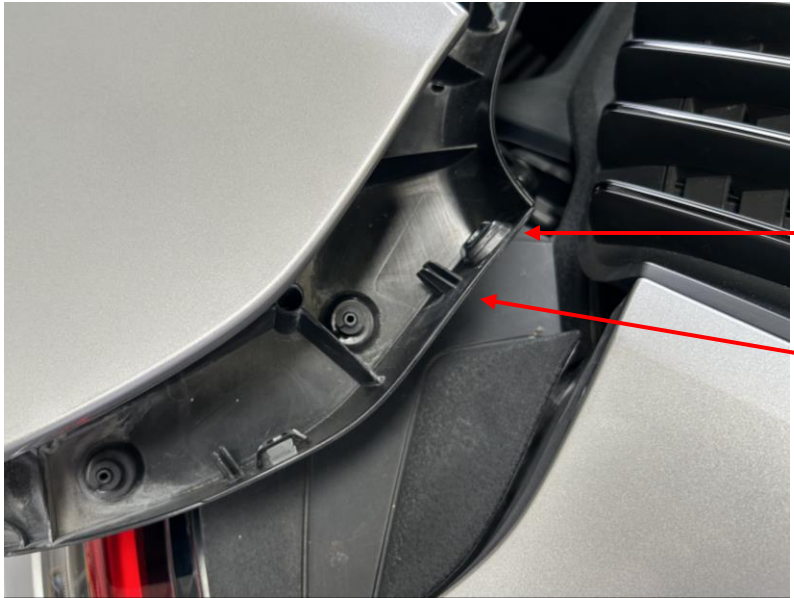


Dissident Ducktail Spoiler Fitting



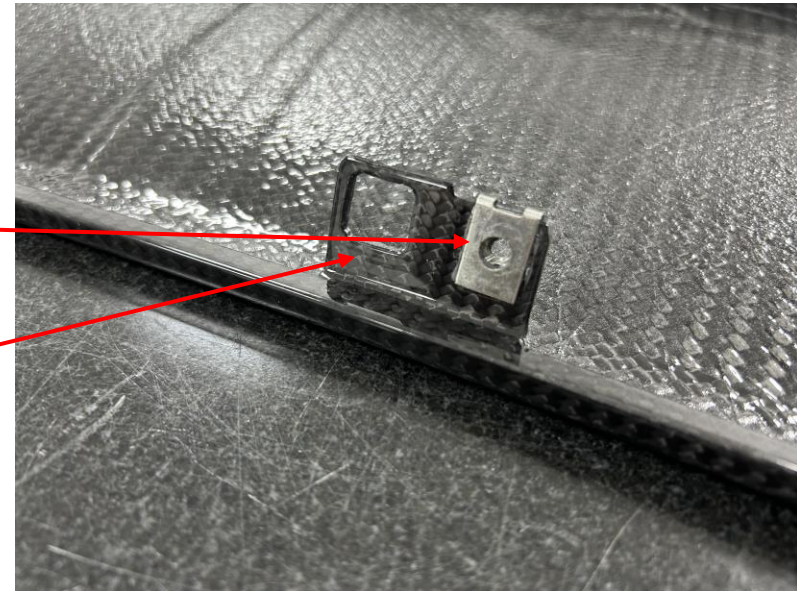
- With the standard spoiler removed the metal clips should be slid off from each of its mounting tabs
- They should then be added to each of the Dissident spoiler mounting tabs being clipped and slid over each of the circular mounting holes as pictured above until all 8 are in place.

Dissident Ducktail Spoiler Fitting



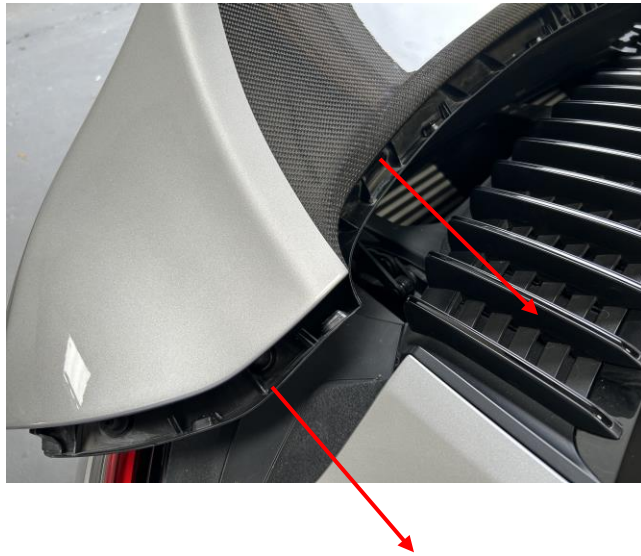
Bolt Hole

Locating Pin



- The ducktail spoiler can now be added to the car. In the lower standard spoiler moulding you can see a male locating pin and a bolt hole at each of the 8 attachment points. The pin should be aligned with the square hole in the mounting tab and the bolt hole with the with the metal clip added to the mounting tab.

Dissident Ducktail Spoiler Fitting



- The ducktail spoiler can now be slid forward onto the mounting points and located
- The ducktail spoiler uses the shape along the lower trailing edge to lock itself into position as per the standard plastic spoiler over the standard plastic lower moulding. The standard lower moulding should slot between the two surfaces shown in the far right picture above when the spoiler is slid forward.
- Re insert and tighten the bolts through each of the eight bolt locations and refit the blanking covers
- This fitment should require no force. If you encounter any resistance check you are sliding over the locating pins correctly and locating correctly into the trailing edge of the spoiler.

Dissident Ducktail Spoiler Fitting



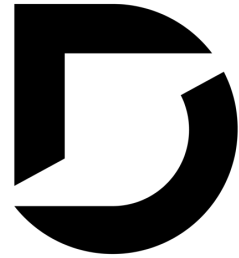
- If needed the Ducktail spoiler can be adjusted laterally and longitude to ensure perfect gap alignment
- The standard Porsche wing base can be adjusted by loosening 6 bolts, 4 from the underside (a cover will need to be removed) and 2 from the top side once the wing cover is removed
- Lightly tighten the top 2 until you can still move the part but with a slight amount of stiction
- Fit the Dissident wing into place and move into position until all gaps are equal.
- Panel height can be adjusted via 3 plastic screws located on the underside in the locations highlighted above
- Remove the wing and tighten all bolts securely

Dissident Ducktail Spoiler Fitting



- Once Properly attached the spoiler can be lowered and is ready for use
- Alignment should be confirmed to the rear quarters. If adjustment is required then loosen all 8 mounting bolts, manipulate the spoiler as required and re-tighten the bolts.
- Ensure secure attachment prior to any use.





DISSIDENT

Dissident Masking Approach Ducktail Spoiler

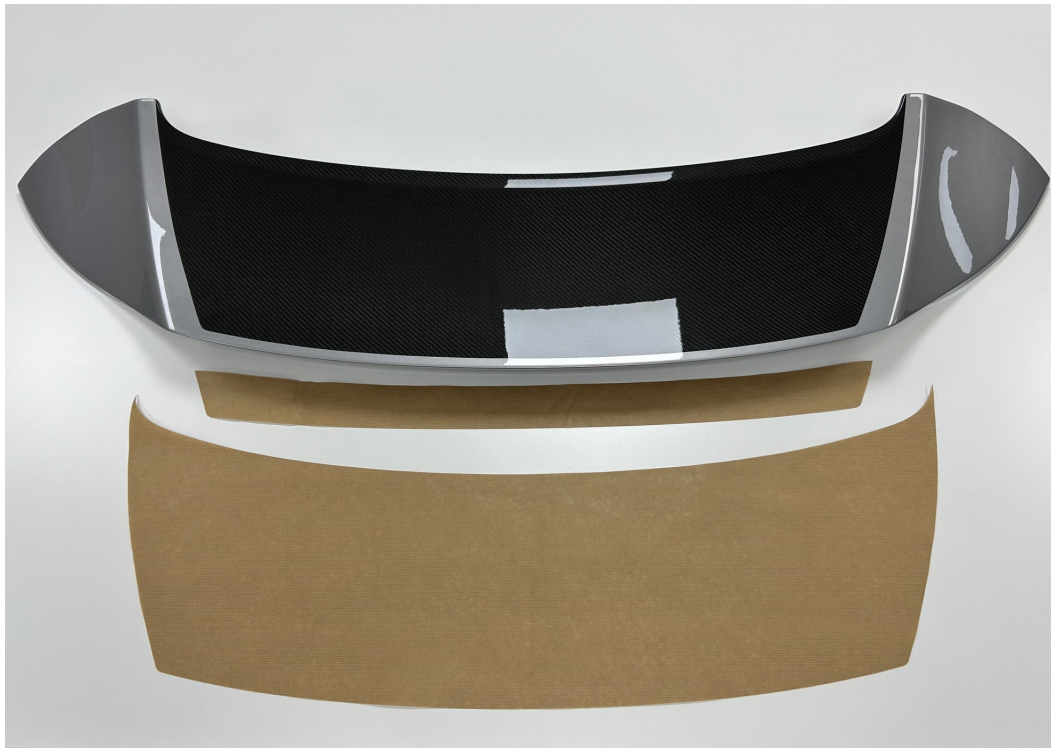
Dissident Ducktail Spoiler Masking Approach



- This guide illustrates the preferred approach utilized by Dissident to mask our ducktail spoiler for painting in our launch edition scheme.
- All approaches & techniques are a guide only. There is no guarantee implied or given as to the quality of the painted product. It is the responsibility of the painter to ensure the desired end quality is achieved. They may wish to apply their own preferred approaches. No reference to any material surface preparations or paint products is made in the document, that is the painters complete discretion.

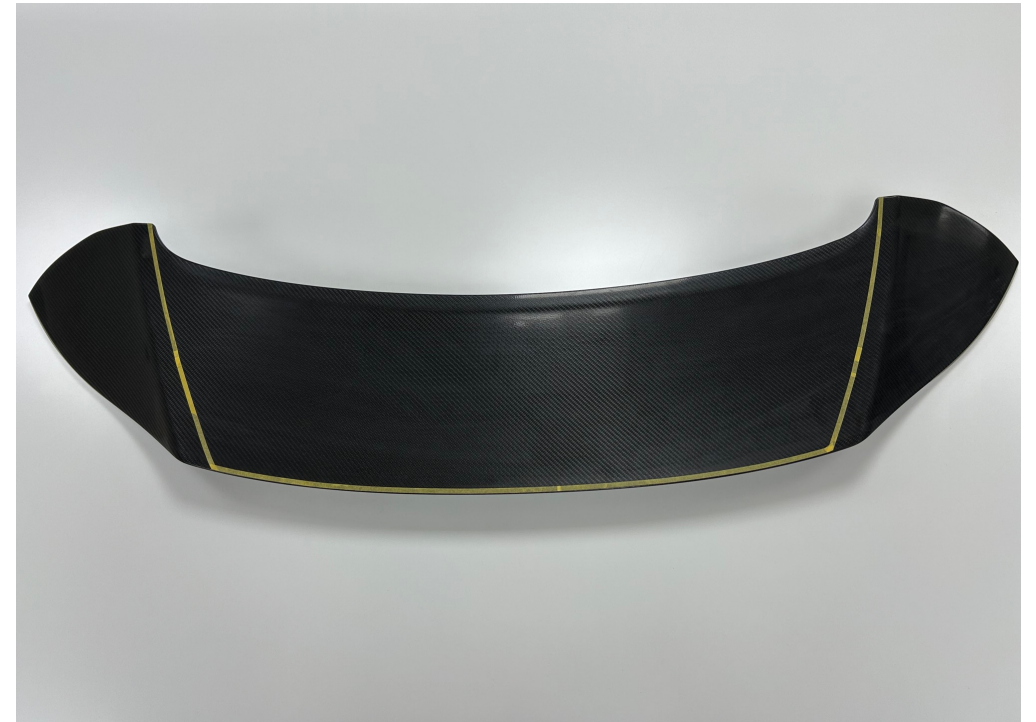
Dissident Ducktail Spoiler Masking Approach

- A digitally cut set of paper templates is included with each kit. This template is to the exact size of the area of the visual carbon spaces on the top and rear faces of the ducktail spoiler. It is NOT self adhesive.



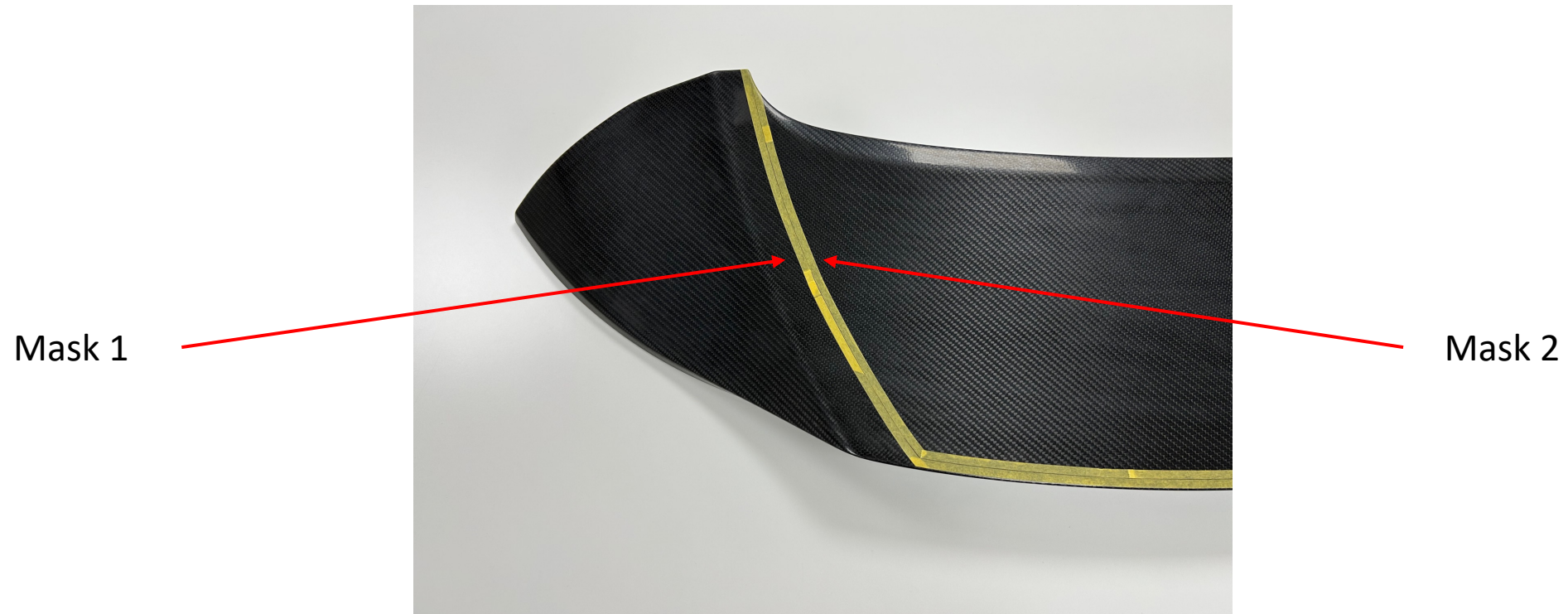
Dissident Ducktail Spoiler Masking Approach

- The paper template should be gently tacked into position using masking tape or another suitable equivalent
- A fine line masking tape should then be used to trace the outer edge of the template. The paper template mask can then be removed.



Dissident Ducktail Spoiler Masking Approach

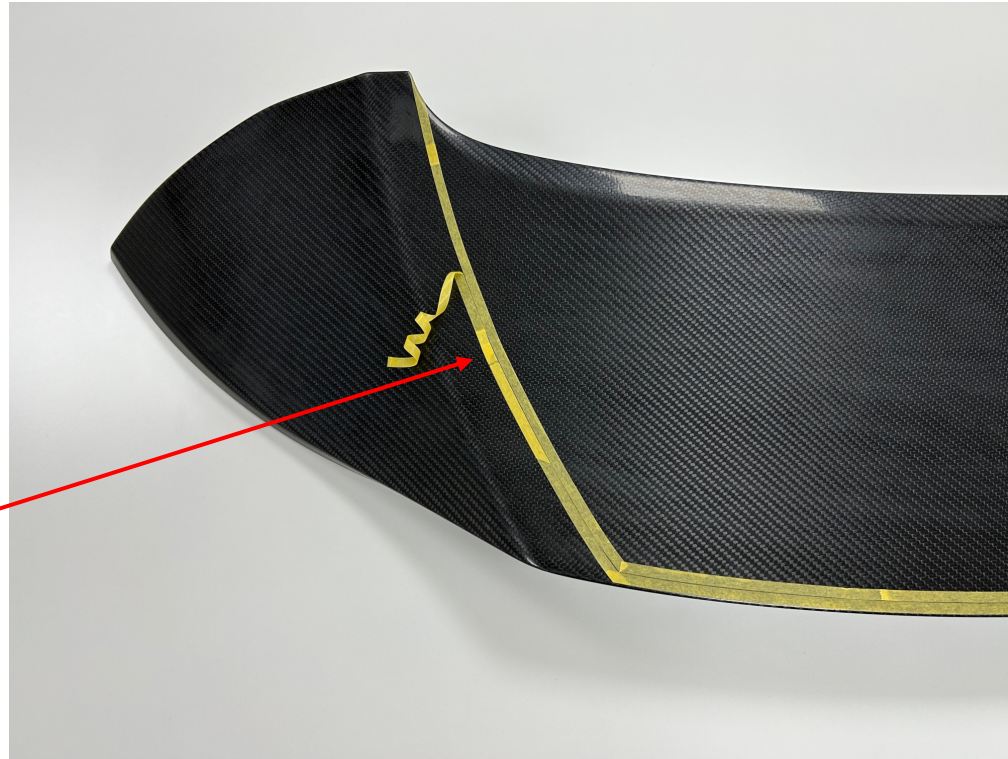
- With the paper template removed a second strip of fine line mask (Mask 2) should be applied inside but immediately up to the inner boundary of the original tape (Mask 1). This will serve to be the coloured paint boundary when painted later.



Dissident Ducktail Spoiler Masking Approach

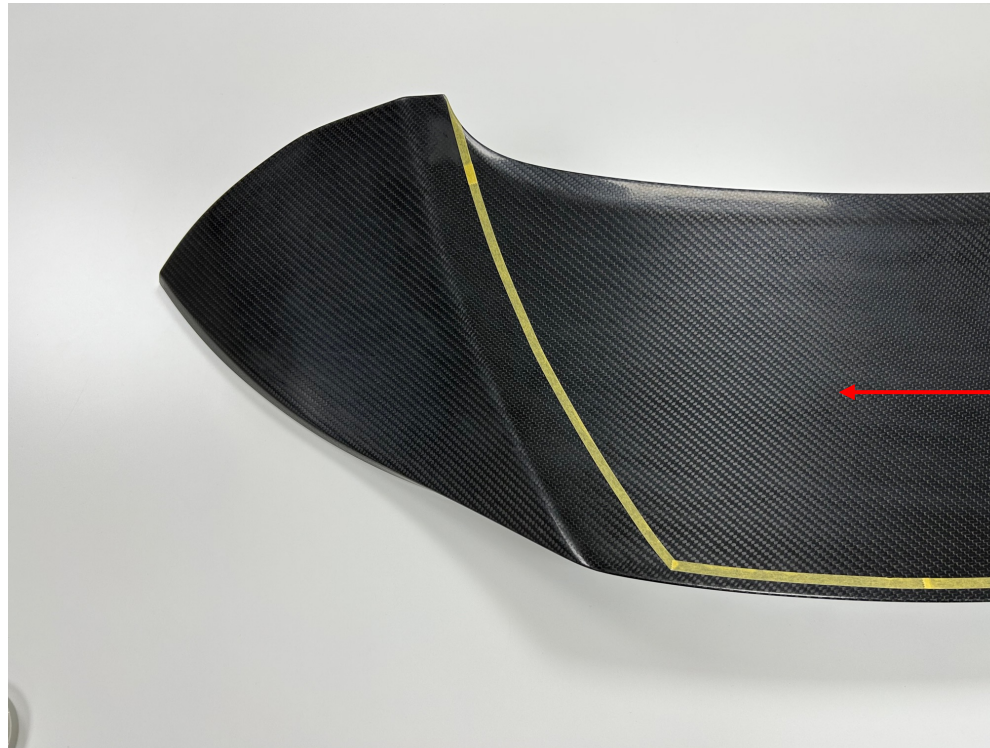
- The outer fine line mask (Mask 1) is now removed

Mask 1



Dissident Ducktail Spoiler Masking Approach

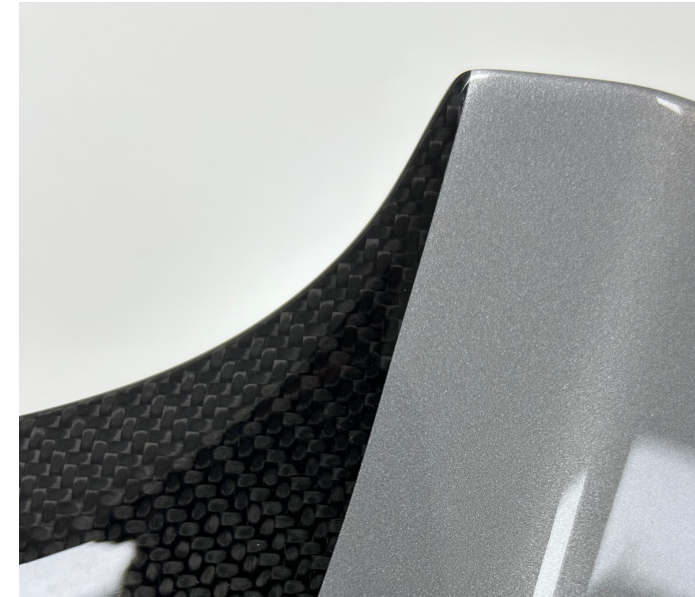
- With the outer strip now removed the inner visual carbon area area can be masked to keep it clear of any body colour paint.



Mask this visual carbon area completely to ensure no coloured paint can reach the surface of the carbon fibre

Dissident Ducktail Spoiler Masking Approach

- Repeat the same process for the smaller rear visual carbon panel.
- Prior to painting ensure the mask line aligns correctly with the rear quarter panel in the critical area shown. If it does not then make adjustments until suitable.



Critical mask alignment area